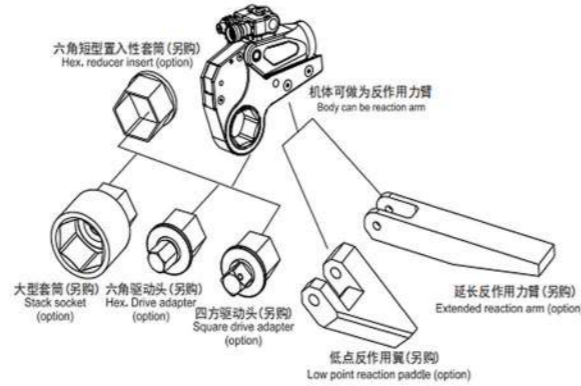
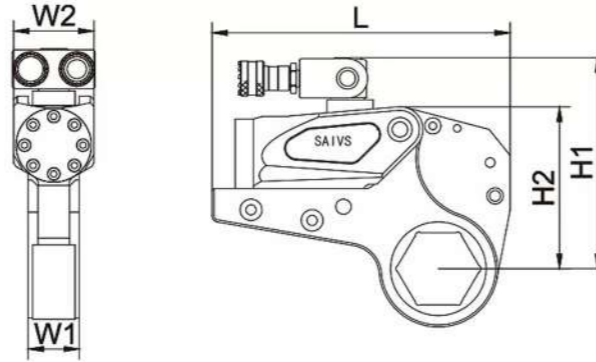


SOW series, Low Profile Hydraulic Torque Wrench



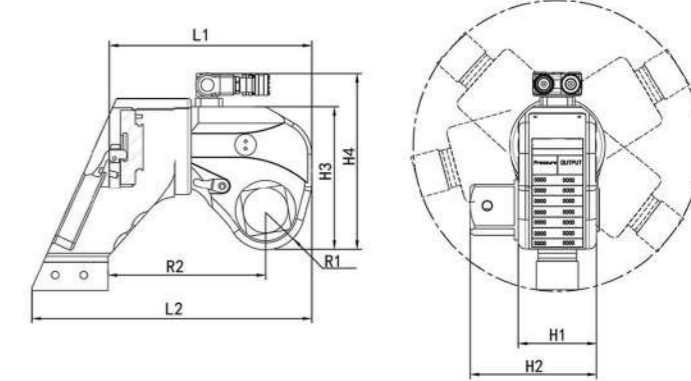
Features

- Accuracy: ± 3%, Repeatability: 100%
- Maximum operation pressure: 700 bar/10000psi
- Tool body can be Reaction Arm, easy to work.
- Designed for tighten and loosen high torque applications.
- 360° x 180° uni swivel quick release couplings.
- Maximum torque power with minimum wall thickness.
- Various cassettes, adaptors and reducers are available.
- Durable structure, aluminium-titanium alloy and light body.
- Suitable for continuous operations at maximum pressure.
- Pressure relief valve prevents over pressure.
- High strength Alloy steel body. Rust-resistant Finish.
- "Drop Hole" will protect over pressure operating.



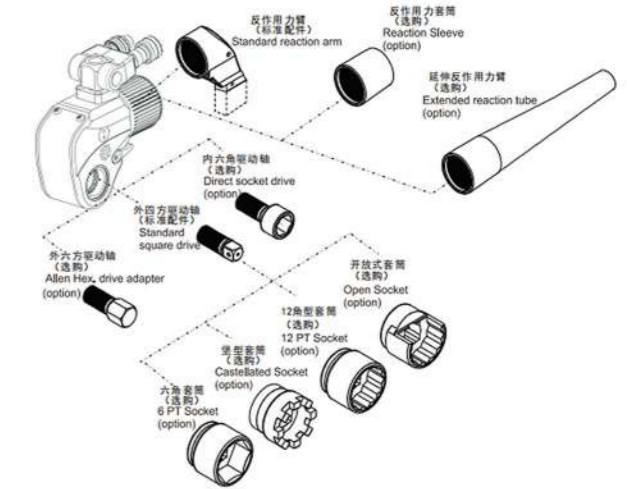
| Model | Torque N.m | Hexagon mm | Cylinder Weight Kg | Cassette Weight Kg | Dimensions (mm) | | | | | |
|--------|---------------|---------------|--------------------------|--------------------------|-----------------|-----|-------|-------|----|-----|
| | | | | | L1 | L2 | H1 | H2 | W1 | W2 |
| 2 SOW | 232-2328 | 19-55 | 1 | 1.6 | 195.4 | 186 | 125.9 | 102.3 | 32 | 51 |
| | 241-2414 | 60 | 1 | 1.7 | 195.4 | 186 | 128.5 | 105 | 32 | 51 |
| 4 SOW | 585-5858 | 34-65 | 2 | 4.4 | 261.6 | 245 | 177 | 135.7 | 42 | 66 |
| | 647-6474 | 70-80 | 2 | 4.6 | 261.6 | 245 | 187 | 145.7 | 42 | 66 |
| 8 SOW | 1094-10941 | 41-95 | 3.3 | 8 | 304 | 300 | 207 | 169 | 53 | 83 |
| | 1177-11774 | 100-105 | 3.3 | 8.4 | 304 | 300 | 216 | 178 | 53 | 83 |
| 14 SOW | 1852-18521 | 50-117 | 5.5 | 11.6 | 361 | 361 | 239 | 204 | 64 | 99 |
| 30 SOW | 4188-41882 | 110-155 | 11.4 | 29 | 441 | 430 | 303 | 272 | 85 | 131 |
| | 4459-44593 | 160-175 | 11.4 | 30 | 441 | 430 | 315 | 285 | 85 | 131 |

SBT Series, Square Drive Hydraulic Torque Wrench



Features

- 700 bar maximum working pressure.
- 360 degree Reaction Arm-Easy to working in any position.
- Click-on Reaction Arm-Easy to change Reaction Arm.
- 360 X 180 degree Swivel-Hose-free operation.
- Push-button drive release-Quick change drive side.
- One-way Ratchet-the only way to assure hands-free and multi-tool operation.
- Aviation material Body housing-Aluminum-Titanium alloy and high strength steel.
- Anti-Lock Switch
- Anti-Rust Finish-Special surface treatment.
- Small Operating Radius.
- Anti-Back Lash Mechanism.
- "Drop Hole" will protect over pressure operating.
- Torquet Accuracy: ±3%
- Repeatability: 100%



| Model | Torque (N.m) | Bolt M | Square inch | Weight Kg | Dimensions (mm) | | | | | | | |
|--------|--------------|-----------|----------------|--------------|-----------------|-------|-----|------|------|-------|------|-------|
| | | | | | L1 | L2 | H1 | H2 | H3 | H4 | R1 | R2 |
| 07-SBT | 112-1120 | 14-30 | 3/4" | 1.8 | 111 | 139.3 | 42 | 65.8 | 76.2 | 108.1 | 20.5 | 68.3 |
| 1-SBT | 183-1837 | 16-36 | 3/4" | 2 | 134 | 185.5 | 50 | 72 | 95.5 | 131 | 26 | 99 |
| 3-SBT | 451-4512 | 22-48 | 1" | 4 | 169 | 242 | 68 | 95 | 127 | 176.5 | 34 | 134 |
| 5-SBT | 752-7528 | 27-56 | 1-1/2" | 7 | 203 | 271 | 80 | 123 | 149 | 199 | 39 | 137 |
| 8-SBT | 1078-10780 | 30-64 | 1-1/2" | 9.1 | 216 | 309 | 90 | 134 | 167 | 216.5 | 47 | 171 |
| 10-SBT | 1551-15516 | 36-72 | 1-1/2" | 13 | 238 | 340.5 | 100 | 142 | 182 | 231.5 | 51 | 174 |
| 15-SBT | 2063-20627 | 39-80 | 2-1/2" | 21 | 285 | 395 | 110 | 178 | 200 | 250 | 55 | 222 |
| 20-SBT | 2666-26664 | 42-90 | 2-1/2" | 25 | 300 | 466.5 | 120 | 183 | 220 | 269.5 | 59 | 250.5 |
| 25-SBT | 3472-34725 | 48-100 | 2-1/2" | 31 | 313 | 461 | 137 | 200 | 247 | 296.5 | 66 | 250.5 |
| 35-SBT | 4866-48666 | 64-120 | 2-1/2" | 45 | 362 | 496.5 | 153 | 216 | 282 | 331.5 | 77 | 271 |
| 50-SBT | 7200-72000 | 72-125 | 2-1/2" | 87 | 400 | 516 | 160 | 223 | 291 | 341 | 81 | 259 |