

SAI GM Series Motor

SAI Series Radial Piston Hydraulic Motors



Model:GM05/GM1/GM2/GM3/GM4/GM5/GM6/GM7/GM9

Name: SAI GM Hydraulic Motor

Motor Type:Radial Piston Hydraulic Motors

Nominal Pressure: 25MPa

Place of Origin:Zhejiang, China

Power:Hydraulic Packaging & Delivery

Working pressure range:40MPa

control mode:Pressure flow control

Material:cast iron

Operating mode:Open cuits

Warranty:1 Year

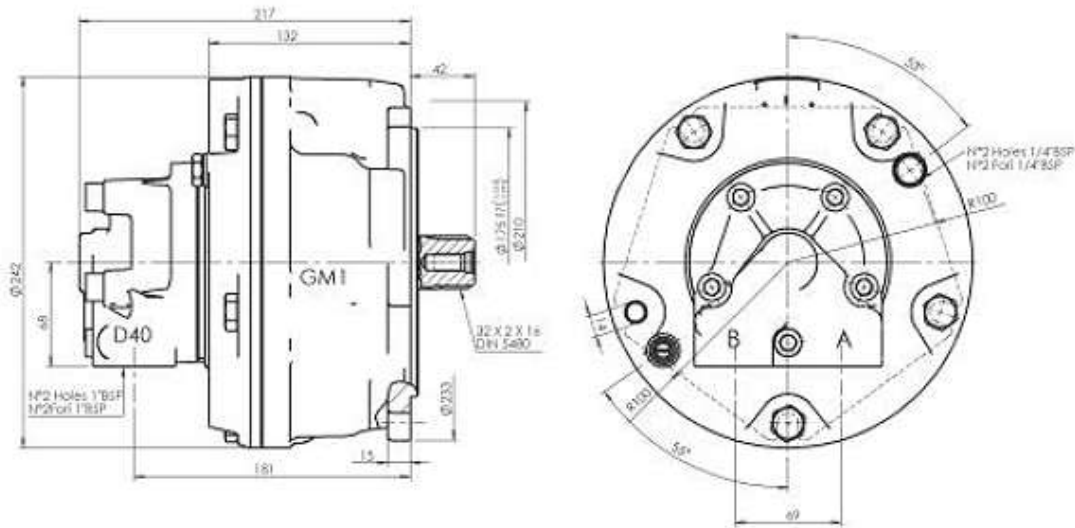
Minimum Order : 1 Pieces

Supply Ability : 1000 Pieces/ Month

Sample:Contact us for free samples

SAI GM Series Motor

SAI Series Radial Piston Hydraulic Motors



Flange and shaft dimensions are the same as for M1 and P1 Series motors

Le dimensioni della flangatura e degli alberi sono uguali a quelli delle serie M1 e P1

SHAFTS

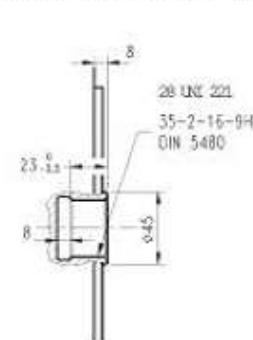
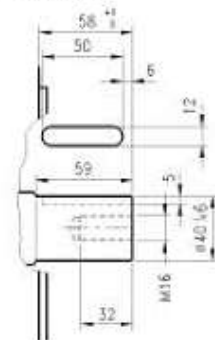
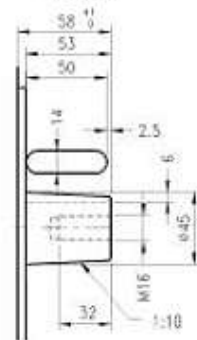
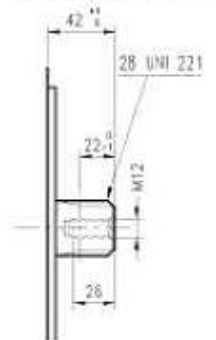
ALBERI

Splined DIN 5480 7
Calettato UNI 221 1

Tapered 2
Conico

Cylindrical 8
Cilindrico

Internal spline DIN 5480 9
Calett. intern. UNI 221 3

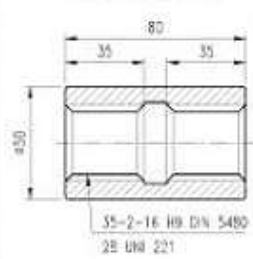


SPLINE DATA - CALETTATURE

ADAPTORS MANICOTTI

35-2-16 DIN 5480	
	<p>d0 Ø32.0</p> <p>d1 Ø35.0 $^{+0.020}_{-0}$ H14</p> <p>d2 Ø31.0 $^{+0.018}_{-0}$ H11</p> <p>A Ø3.5</p> <p>da Ø27.711 H11</p> <p>d3 Ø34.6 $^{+0.020}_{-0}$ h11</p> <p>d4 Ø30.6 $^{+0.020}_{-0}$ h14</p> <p>B Ø4.0</p> <p>db Ø39.000 f8</p>

28 UNI 221 (6-28-34 DIN 5463)	
	<p>d1 Ø28.0 $^{+0.017}_{-0}$ H7</p> <p>d2 Ø34.1 $^{+0.018}_{-0}$ H11</p> <p>A 7.0 $^{+0.025}_{-0.013}$ F7</p> <p>d3 Ø28.0 $^{+0.017}_{-0}$ g6</p> <p>d4 Ø34.0 $^{+0.017}_{-0}$ h14</p> <p>B 7.0 $^{+0.025}_{-0.013}$ F7</p>



SAI GM Series Motor

SAI Series Radial Piston Hydraulic Motors



**PERFORMANCES TABLE
TABELLA DELLE PERFORMANCE**

GM05		40	60	75★	90	110★	130	150	170★	200
Displacement / Cilindrata	cm ³ /rev	39	59	74	86	115	129	151	161	191
Bore / Alesaggio	mm	25	25	28	37	35	37	40	42	45
Stroke / Corsa	mm	16	24	24	16	24	24	24	24	24
Specific torque / Coppia spec.	Nm/bar	0,62	0,94	1,18	1,37	1,83	2,05	2,40	2,64	3,04
Cont. Pressure / Press. Cont.	bar	250	250	250	250	250	250	250	250	250
Peak pressure / Press. Picco	bar	450	450	425	375	400	375	325	325	280
Cont. speed / Velocità Cont.	rpm	700	700	700	700	650	650	650	600	600
Max. speed / Velocità Max.	rpm	1000	1000	1000	1000	900	900	900	800	800
Peak power / Potenza picco	kW	20	20	33	33	33	33	33	33	33