

“Cost effective hydraulic tools& equipment
solutions offered quality products & service.”

SAIVS



NINGBO SAIVS MACHINERY CO.,LTD.

Add: Jia industrial Zone, Yunlong Town, Yinzhou District, Ningbo City, China

Tel: +86 574 8834 4911 Fax: +86 574 8834 5368

Email: sales@saivs.com

www.saivs-industrial.com

SAIVS

HYDRAULIC TOOLS & EQUIPMENT MANUFACTURER

SAIVS

TIGHTEN THE SAFELY

EQUIPMENT MANUFACTURER
HYDRAULIC TOOLS

LIFT YOUR BUSINESS



ABOUT SAIVS



Introduction

Established in Ningbo, China in 1990, SAIVS began as a manufacturer and exporter of investment casting, sand casting, die-casting and CNC machining parts (eg. Cylinder ends, valve bodies, screw cylinder, auto parts, marine parts etc.). In 2002, hydraulic tools research department was settled and company developed its first lines of hydraulic tools and equipment. Today SAIVS is reckoned as one of the most preferred experienced manufacturers and exporters of hydraulic tools and equipment in the industrial market.



Our Mission

At SAIVS, our focus is to provide our customers with the reliable products and integrity service - to support their business to be more successful.

Our Team













In SAIVS, over 30 engineers ensured our design capability, technical support capability and problem solving capability to provide best support to our clients. Production quality is guaranteed by 20 years production experience and 300 skilled works. We are ready to assist you.

Our Products

Our hydraulic tools and equipment deliver reliable and dependable performance. It includes hydraulic bolting tools, hydraulic cyliner, hydraulic pump and hydraulic heavy lifting solution etc.. Our products are wildely used in industry field of steel, shipbuilding, electric power, chemical, metallurgic, construction and many others. SAIVS quality management system is approved by ISO 9001 and offered one year warranty for all range products.



Hydraulic Component

Component Type and Functions	Series		Page
Hydraulic Components Summary			67
Pump Mounted Directional Control Valves	VM VE		69
Remote Directional Control Valves	VC VEC		71
Directional Control Valves Dimensions	VM VE VC VEC		72
Control Valves	V		73
Control Valves Dimensions	V		75
Fittings			76
High Pressure Hydraulic Hoses	SZ SY		77
Quick Couplers	SA SB SD		78
Hydraulic Pressure Gauge	YN		79
Digital Hydraulic Pressure Gauge	YD		80
Gauge Accessories	SPS SGA SPNV38M38FT		81
Manifolds	SF		82
Pump Head	R02 R05 R04 R06 R03/R031 R01 R012		83
Piston Plunger	EA EB		89

Hydraulic Components Summary

SAIVS provides all hydraulic accessories as required to complete your ultra-high pressure hydraulic system, which is compatible with cylinders, pumps and tools using to ensure effective operation, durability and safety.

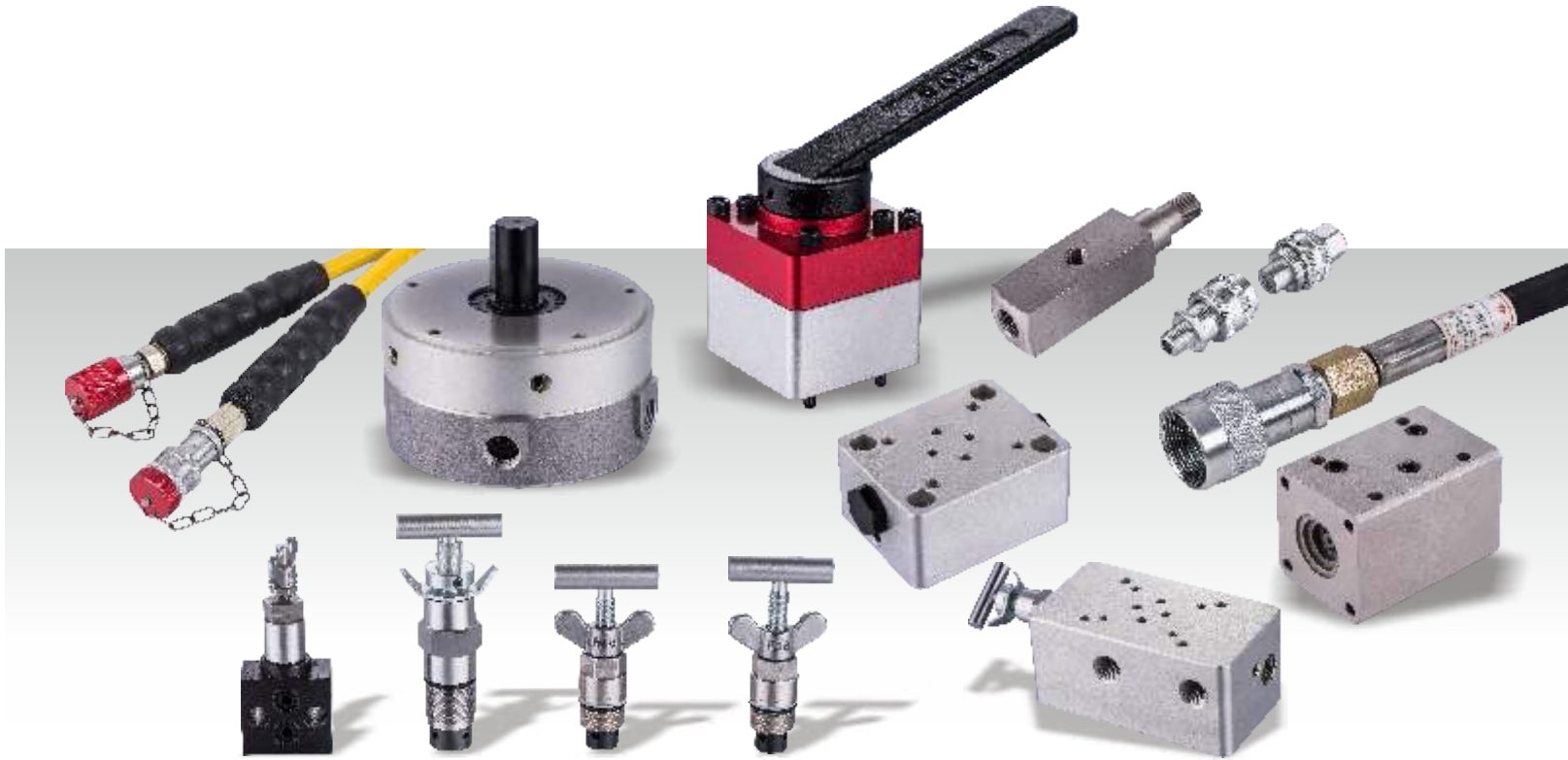
Provides a complete set of hydraulic tubing, quick connector, changeover connector, pressure gauge and pressure gauge adaptor.

Provides a full range of hydraulic valves to meet your application, pump installation direction control valve, remote direction control valve, pressure control valve, stop valves and dispensers are available for your hydraulic control system solutions.

The radial plunger pump head is provided. The high efficiency design increases the flow rate, reduces the heat and reduces the power consumption. As a result, the speed and service life of the whole hydraulic system are increased, thus increasing productivity and reducing operating costs."

Maintain system integrity

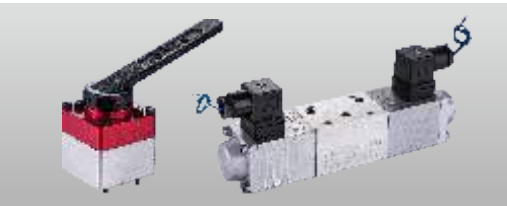
Please use the hydraulic elements provided by SAIVS to achieve the optimum performance.



VW/VE Series, Pump Mounted Directional Control Valves

Flow Capacity: 15 L/min

Max.Operating Pressure: 700bar



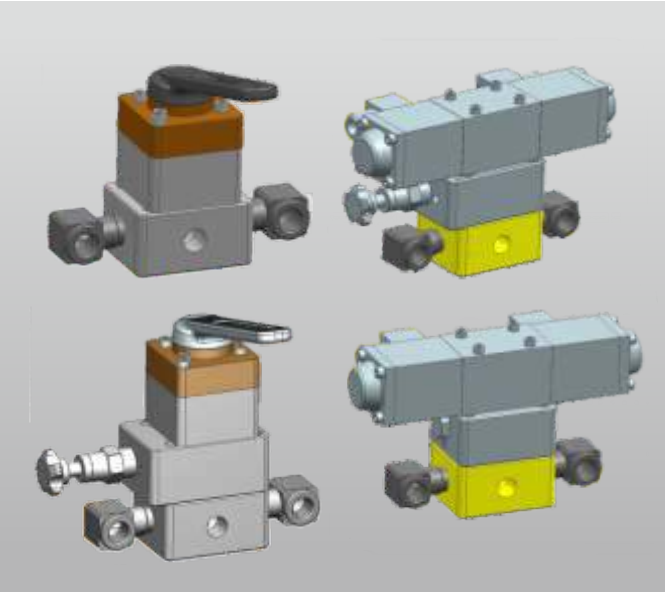
Model Number	Valve Type	Hydraulic Symbols	Schematic Flowpath			Valve Operating	Valve Character	Used with Cylinder
			Advance	Hold	Retract			
VM32	2-Position 3-Way Valve					Manual		Single-acting
VM33M	3-Position 3-Way Valve					Manual	Tandem Center	Single-acting
VM33ML	3-Position 3-Way Valve					Manual	Tandem Center Locking	Single-acting
VM330	3-Position 3-Way Valve					Manual	Closed Center	Single-acting
VM330L	3-Position 3-Way Valve					Manual	Locking Center	Single-acting
VM43M	3-Position 4-Way Valve					Manual	Tandem Center	Double-acting
VM43ML	3-Position 4-Way Valve					Manual	Tandem Center Locking	Double-acting
VM430	3-Position 4-Way Valve					Manual	Closed Center	Double-acting
VM430L	3-Position 4-Way Valve					Manual	Locking Center	Double-acting
VM43H	3-Position 4-Way Valve					Manual	Interflow Center	Double-acting

Features

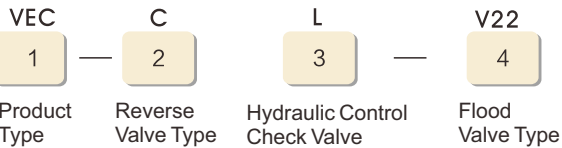
- Advance/Retract and Advance/Hold/Retract operation of single-acting and double-acting cylinders and tools.
- Manual or solenoid operation.
- Pump mounting with retrofit on most pumps.
- User adjustable relief valve allows the operator to easily set the working pressure.

Model Number	Valve Type	Hydraulic Symbols	Schematic Flowpath			Valve Operating	Valve Character	Used with Cylinder
			Advance	Hold	Retract			
VE32	2-Position 3-Way Valve					Manual		Single-acting
VE330	3-Position 3-Way Valve					Manual	Tandem Center	Single-acting
VE330L	3-Position 3-Way Valve					Manual	Tandem Center Locking	Single-acting
VE430	3-Position 4-Way Valve					Manual	Closed Center	Double-acting
VE430L	3-Position 4-Way Valve					Manual	Locking Center	Double-acting
VE43H	3-Position 4-Way Valve					Manual	Interflow Center	Double-acting
VM43M	3-Position 4-Way Valve					Manual	Tandem Center	Double-acting
VE43ML	3-Position 4-Way Valve					Manual	Tandem Center Locking	Double-acting
VE43Y	3-Position 4-Way Valve					Manual	Tandem Center Locking	Double-acting
VE43YL	3-Position 4-Way Valve					Manual	Tandem Center Locking	Double-acting

VC / VEC Series, Remote Directional Control Valves



This is how a Remote Directional Control Valve model is built up:



1. Product Type

VC= Remote Control by Handle Reverse Control Vavle Series
VEC=Remote Solenoid Directional Control Valve Series
(Solenoid Provide Valtage:DC240V)

2. Reverse Valve Type

VM Series Handle Reversing Valve Type: 20,4,3,15
VE Series Solenoid Directional Valve Type: A、B、C、
D、E、F、G、P

Flow Capacity: 15 L/min

Max.Operating Pressure: 700bar

Features

- Advance/Retract and Advance/Hold/Retract remote operation of single-acting and double-acting cylinders and tools.
- Manual or solenoid operation.

Ordering example

Code: VC-20L-V22
VC series remote handle directional control valve,with closed center three-position four - way directional valve,and bothway hydraulic control check valve,port "A" flood valve.

Ordering example

Code:VEC-FL
VEC series remote Solenoid directional control valve,with tandem center solenoid reversing vane,and hydraulic control check vane.

3. Hydraulic Control Check Valve

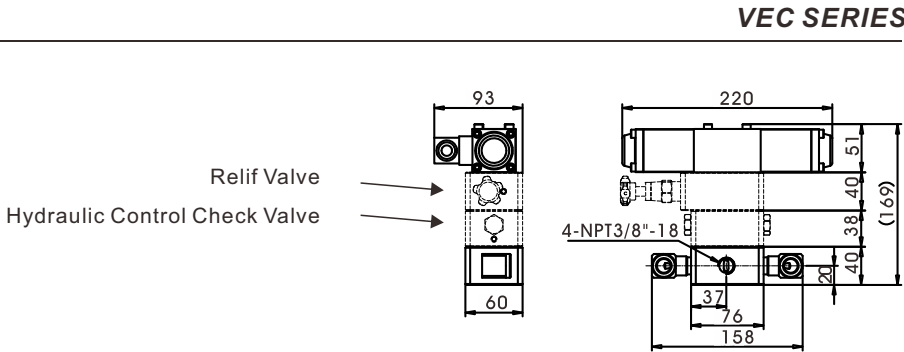
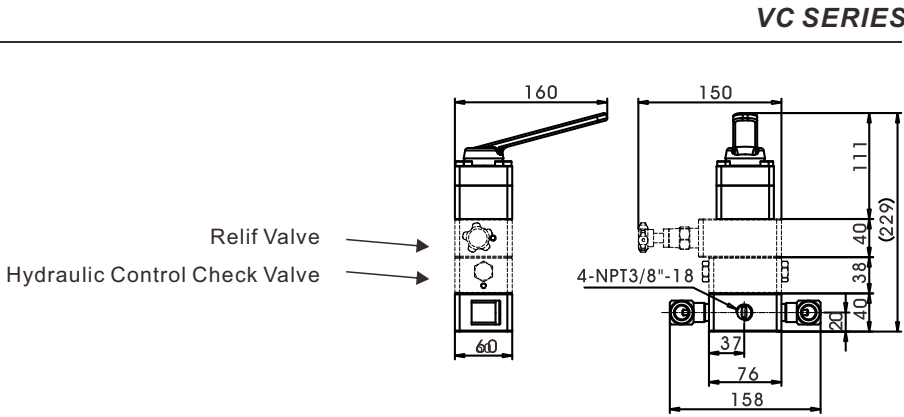
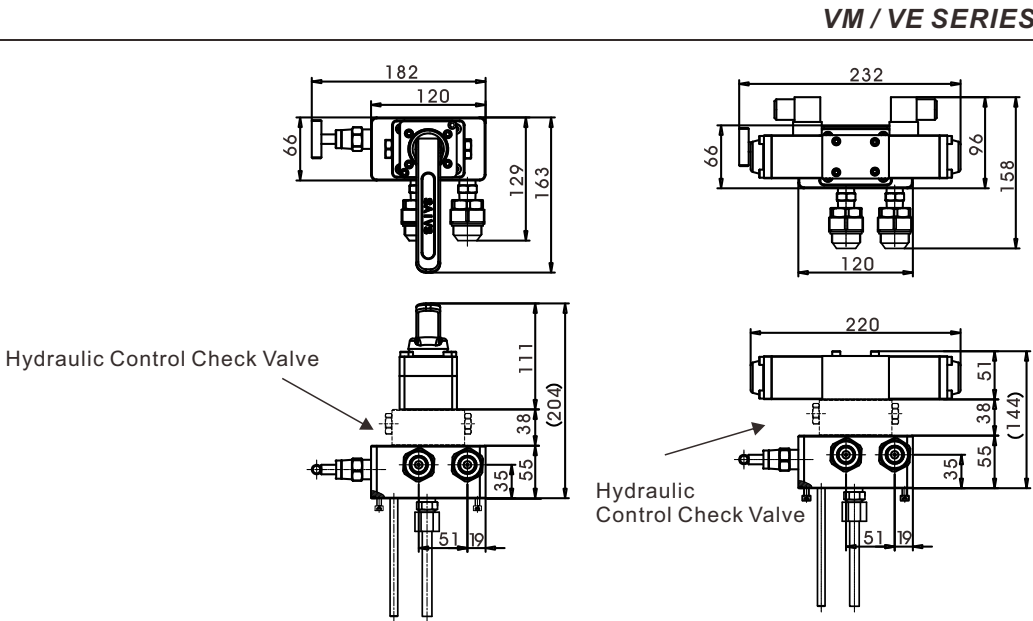
L=V13(Hydraulic Control Check Valve)

4. Flood Valve Type

V22: Port "A" stacked flood valve
V23:Port "A"+"B" stacked flood valve
V24: Port"P"+"A" stacked flood valve
V25: Port"P" stacked flood valve

VM Series Valve Model Code				VE Series Valve Model Code			
Model Code	Drawing	Valve Type	Mthched Cylinder	Model Code	Drawing	Model Code	Drawing
20		Three-position four-way,Closed Center	Double acting	A		E	
4		Three-position four-way,Tandem Center	Double acting	B		F	
3		Three-position four-way,Tandem Center	Single action	C		G	
15		Three-position three-way,Closed Center	Single action	D		P	

VM / VE / VC / VEC Series, Directional Control Valves Dimensions



V Series, Control Valves



Max.Operating Pressure: 700bar

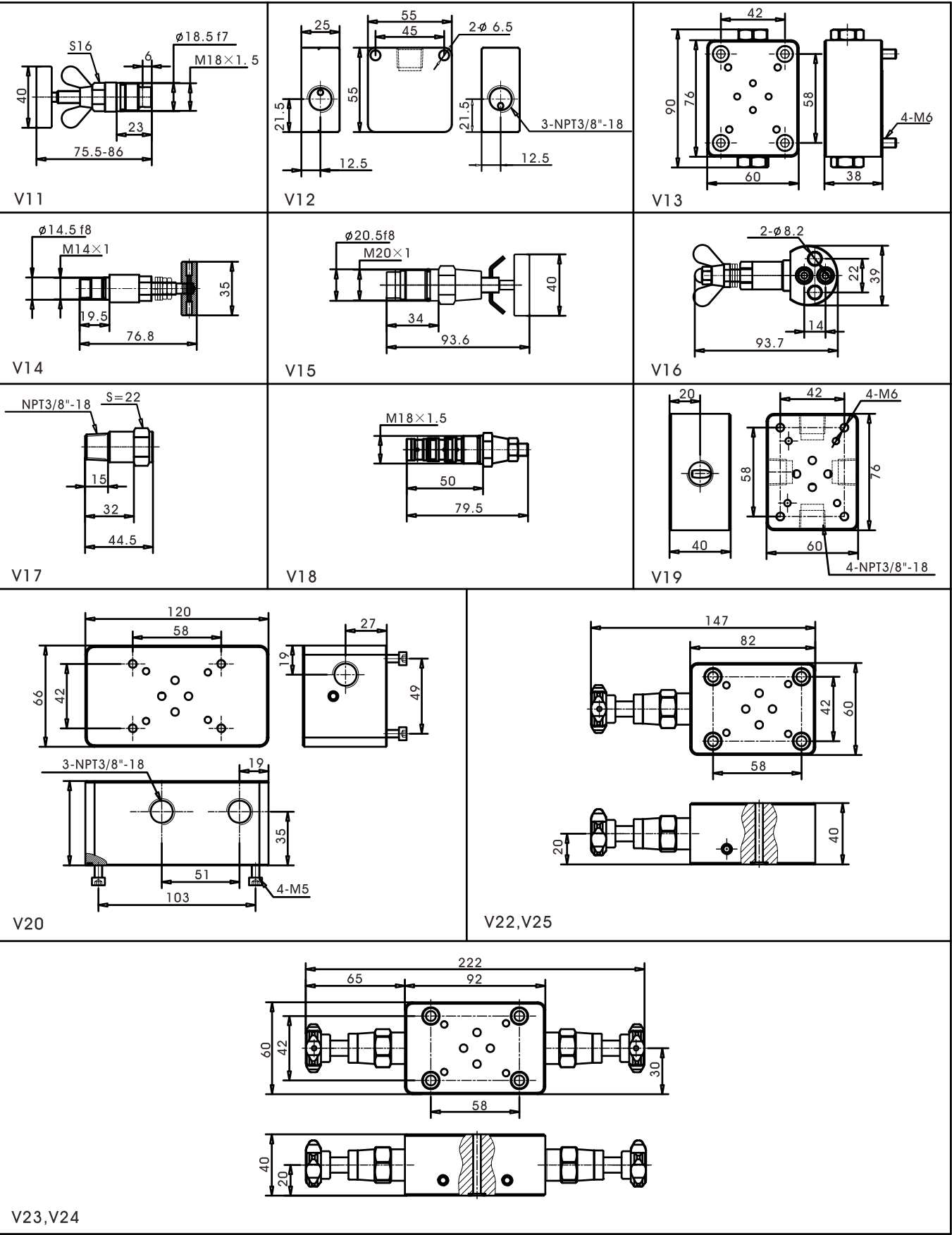
Features

- Rated working pressure of Valve:700bar
- All of the valve with anti-corrosion treatment or plating treatment.

Model Number	Valve Type	Hydraulic Symbol	Overall Shape	Description
V11	3.5 Size Line Cartridge Break Valve			1. Can control the speed of Cylinder; 2. Can replace with the break valve; 3. Can replace with the pressure Gage's Cushion valve;
V12	Plate Type Hydraulic Check Valve			1. Can directly install on the cylinder, lock the loading when the hydraulic system without the pressure. Also can use for double-acting cylinder.
V13	Modular Throttle Double Hydraulic Control Check Valve			1. Install on the hydraulic system, to keep lock of system without pressure.
V14	2 Lines Plug-in Relief Valve			1. Ensure limit the pumps' pressure, the valve will be opened when the pressure reach set point. 2. Pressure adjustment range: 1-700bar; Precision: ±2%; use for small flow pump;
V15	4 Lines Plug-in Relief Valve			1. Ensure limit the pumps' pressure, the valve will be opened when the pressure reach set point; 2. Pressure adjustment range: 1-700bar; Precision: ±2%; use for big flow pump;
V16	Board Over flow Valve			1. Ensure limit the pumps' pressure, the valve will be opened when the pressure reach set point; 2. Pressure adjustment range: 1-700bar; Precision: ±2%; Can be installed on the valve block, also can replace pressure maintaining valve ;
V17	Safety Valve			1. It can protect the pump, and to prevent overpressure, also limit the pressure of pump; 2. It can install on the cylinder, to limit the pressure ; 3. Joint Thread: NPT3/8 or NPT1/4;
V18	Cartridge External Control Cverflow Valve			1. It use for high and low pressure pump Assembly, the 2 pumps will working when the pressure is low; If The low pressure pump is unloading, the higher pressure pump will keep working.

Model Number	Valve Type	Hydraulic Symbol	Overall shape	Description
V19	Mounting Block of Remote Control Valve			1. This Install plate stacked with reversing valve, hydraulic check valve, Relief valve, throttle valve. 2. The connect oil hose and joint can be choice as per the customers' requirement. 3. All of the mounting thread with NPT3/8 4. Choice the correct Joint as per the customers' requirement.
V20	Pump Mounting 's Basics Block			1. This instal block stacked three way four cross handle change valve, electric change valve; 2. The connect oil hose and Joint can be choiced as per the customers' requirement; 3. The mounting thread: MPT3/8; 4. Choice the correct Joint as per the customers' requirement; 5. The amounting block can stack hydraulic control check valve, also the throttle valve ; 6. The valve block with standard relieve valve, also can choice the change valve as per the customers' requirement; 7. The basics block is the standard valve block of pump;
V22	"A" Type Stacked Relieve Valve			The stacked relieve valve can limit the pressure of port "A"
V23	Port "A" + "B" Stacked Relieve Valve			This stacked relieve valve can limit port "A" and "B" pressure
V24	Port "P" + "A" Stacked Relieve Valve			The stacked relieve valve can limit the Por "P" and "A" pressure;
V25	Port "P" Stacked Relieve Valve			The stacked relieve valve can limit the port "P" pressure;

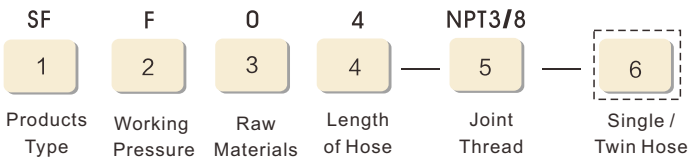
V Series,Control Valves Dimensions



Fittings

Name	Shape	Model Number	Dimensions(mm)				Dimensional Drawing
			A	B	E	F	
90°Pipe Joint (1 Male and 1 Female)		5N9-06	33.5	25	3/8"-18NPTF	3/8"-18NPTF	
		5N9-04-06	31	25	1/4"-18NPTF	3/8"-18NPTF	
		5N9-04-04	28	22.4	1/4"-18NPTF	1/4"-18NPTF	
90°Pipe Joint (2 Female)		7N9-06PK	26	26	3/8"-18NPTF	3/8"-18NPTF	
		7N9-06PK	22.5	22.5	1/4"-18NPTF	1/4"-18NPTF	
Straight Joint (2 Female)		7N-06	29		3/8"-18NPTF	3/8"-18NPTF	
		7N-04	29		1/4"-18NPTF	1/4"-18NPTF	
		7N-04-06	31		1/4"-18NPTF	3/8"-18NPTF	
Straight Joint (1 Male and 1 Female)		5N-04-06	15	36.6	1/4"-18NPTF	3/8"-18NPTF	
Straight Joint (2 Male)		1N-04	15	15	1/4"-18NPTF	1/4"-18NPTF	
		1N-06	16	38	3/8"-18NPTF	3/8"-18NPTF	
		1N-04-06	15	37	1/4"-18NPTF	3/8"-18NPTF	
		1DN-18-04	15	37	1/4"-18NPTF	M18x1.5	
		1DN-18-06			3/8"-18NPTF	M18x1.5	
T-Junction		GN-04-PK	45	22.5	1/4"-18NPTF	1/4"-18NPTF	
		GN-06-PK	52	26	3/8"-18NPTF	3/8"-18NPTF	
Cylinder Joint		SGA-06-18	57	27.5	3/8"-18NPTF	M18x1.5	
Pressure Gage Crossover Joint		SET-FNPT1/4-MG1/2	37	27	1/4"-18NPTF	G1/2"	
		SET-FNPT3/8-MG1/2	38	27	3/8"-18NPTF	G1/2"	
		SGA-06-06	52	17.5	3/8"-18NPTF	3/8"-18NPTF	
		SGA-06-07			1/4"-18NPTF	3/8"-18NPTF	
T-Junction		AD9-18	50	25	M18x1.5		
Sqh		1D9-18	25	25	M18x1.5		

High Pressure Hydraulic Hoses



1, Products Type

SZ=Oil Hose Assembly
SY=Oil Hose

2, Working Pressure

A = 700bar B = 1000bar
C = 1250bar D = 1600bar
E = 2000bar F = 2800bar
Choice the working pressure as per your requirement.

3, Raw Materials

J=Polyurethane
X=Rubber

4, Length of Hose

2=2m; 6=6m; Choice the length of horse as per your requirement.

5,Joint Thread

NPT1/4"=NPT1/4
NPT3/8"=NPT3/8

6, Single/Twin Hose

Single hose= Non mark
Twin hose=2

Features

- Inner diameter 6.4mm.
- Safe and reliable quality.
- Length can be customized according to clients' needs.
- Oil connection could be equipped as the system requires.

Ordering example

Model: SYAX-2-M22X1.5
Hose without quick coupler, maximum working pressure 700bar, rubber tube, length 2m, joint thread M22X1.5.

Model: SZAJ-6-NPT1/4-2
Twin hose assembly, maximum working pressure 700bar, polyurethane tube, length 6m, joint thread NPT1/4 ".
Note: the twin hose is used for hydraulic torque wrench.

Hose Oil Capacity

When using longer hose, it is sometimes necessary to consider the oil capacity when the hose is full.
For 6.4mm internal diameter hoses:
Capacity (cm³) = 32.15 x length (m)

Quick Couplers



Features

- NPT3/8"Thread quick couplers**
- Standard equipment on most hydraulic cylinders.
 - Recommended for use on all hydraulic pumps and cylinders where space and porting permits.
 - Includes "2-in-1" dust cap for on male and female couplers.

M22x1.5 Flush-face quick couplers

- Flush-face,zero-leak operation for minimal spillage.
- Includes dust cap.

NPT1/4"Thread lock-ring quick couplers

- For use hydraulic wrenches and wrench pumps (anti loosening function).
- Includes aluminium dust cap.

G1/4" Flush-face ultra high pressure quick couplers

- For use ultra high pressure(bolt tensioners,1600bar hand pumps).
- Includes dust cap.

Max.pressure: 700-1600bar

Connection: Thread/Flush-face

Thread Sealer

When using teflon sealing tape, tighten the sealing tape from one turn away from the end of the thread to prevent it from falling off in the hydraulic system.

Warning

Couplers should be pressurized only when completely connected,and should not be coupled or uncoupled when pressurized.

Internal Diameter	Material	Hose Length	Single Hose /Twin Hose	Model Number			
				700 bar		1000bar	
(mm)		(m)		NPT1/4"	NPT3/8"	NPT1/4"	NPT3/8"
6.4	Polyurethane hose	2	Single Hose	SZAJ-2-NPT1/4	SZAJ-2-NPT3/8	SZBJ-2-NPT1/4	SZBJ-2-NPT3/8
		3		SZAJ-3-NPT1/4	SZAJ-3-NPT3/8	SZBJ-3-NPT1/4	SZBJ-3-NPT3/8
		6		SZAJ-6-NPT1/4	SZAJ-6-NPT3/8	SZBJ-6-NPT1/4	SZBJ-6-NPT3/8
		9		SZAJ-9-NPT1/4	SZAJ-9-NPT3/8	SZBJ-9-NPT1/4	SZBJ-9-NPT3/8
		12	Twin Hose	SZAJ-12-NPT1/4	SZAJ-12-NPT3/8	SZBJ-12-NPT1/4	SZBJ-12-NPT3/8
		2		SZAJ-2-NPT1/4-2	SZAJ-2-NPT3/8-2	SZBJ-2-NPT1/4-2	SZBJ-2-NPT3/8-2
		3		SZAJ-3-NPT1/4-2	SZAJ-3-NPT3/8-2	SZBJ-3-NPT1/4-2	SZBJ-3-NPT3/8-2
		6		SZAJ-6-NPT1/4-2	SZAJ-6-NPT3/8-2	SZBJ-6-NPT1/4-2	SZBJ-6-NPT3/8-2
	Rubber hose	9	Single Hose	SZAJ-9-NPT1/4	SZAJ-9-NPT3/8	SZBJ-9-NPT1/4	SZBJ-9-NPT3/8
		12		SZAJ-12-NPT1/4	SZAJ-12-NPT3/8	SZBJ-12-NPT1/4	SZBJ-12-NPT3/8
		2		SZAX-2-NPT1/4	SZAX-2-NPT3/8	SZBX-2-NPT1/4	SZBX-2-NPT3/8
		3		SZAX-3-NPT1/4	SZAX-3-NPT3/8	SZBX-3-NPT1/4	SZBX-3-NPT3/8
		6		SZAX-6-NPT1/4	SZAX-6-NPT3/8	SZBX-6-NPT1/4	SZBX-6-NPT3/8
		9		SZAX-9-NPT1/4	SZAX-9-NPT3/8	SZBX-9-NPT1/4	SZBX-9-NPT3/8
		12		SZAX-12-NPT1/4	SZAX-12-NPT3/8	SZBX-12-NPT1/4	SZBX-12-NPT3/8

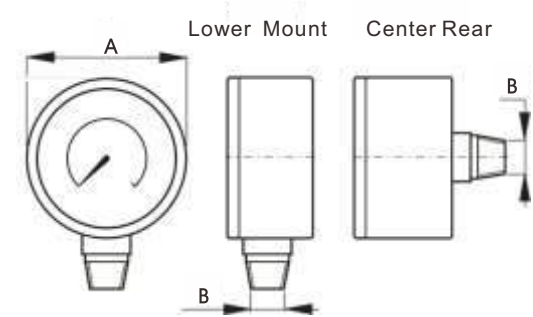
Max.pressure (bar)	Model Number			Thread	CouplerType	
	Complete Set	Male	Female			
700	SA-M22X1.5	SFA-M22X1.5	SMA-M22X1.5	M22X1.5	Flush-face quick couplers	
700	SA-NPT3/8"	SFA-NPT3/8"	SMA-NPT3/8"	NPT3/8"-18	Thread quick couplers	
1000	SB-NPT1/4"	SFB-NPT1/4"	SMB-NPT1/4"	NPT1/4"-18	Thread lock-ring quick couplers	
1600	SD-G1/4"	SFD-G1/4"	SMD-G1/4"	G1/4"	Flush-face ultra high pressure quick couplers	

YN Series, Hydraulic Pressure Gauge



Features

- Calibrated for dual scale reading in PSI and MPa.
- All pressure sensing parts are sealed and damped by glycerine for long life.
- Fast,easy installation.
- Stainless steel gauge cases for corrosion resistance.



Pressure Range: 0-1600bar/23000psi

Face Diameter: 63-100mm

Accuracy of full scale: $\pm 1.0-2.0\%$



Gauge Adaptors

For easy mounting of a pressure gauge onto your system. For details, please refer to the section "hydraulic components".



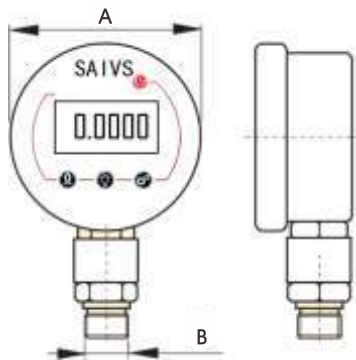
Model Number	Pressure Range		Dimensions(mm)		
	Mpa	psi	Face Diameter(A)	Thread(B)	Connection
YN-63-70MPa	0-70	0-10000	63	NPT1/4"	Lower Mount
YN-100-100MPa	0-100	0-15000	100	G1/2"、M20X1.5	Lower Mount
YN-100Z-100MPa	0-100	0-15000	100	G1/2"	Center Rear
YN-100-160MPa	0-160	0-23000	100	G1/2"	Lower Mount

YD Series, Digital Hydraulic Pressure Gauge



Features

- High accuracy and long-term stability, small time and temperature drift and strong anti-interference ability.
- The design of micro power consumption and double power supply greatly reduces the replacement of batteries.
- Switch to 11 pressure units as MPa, bar, psi, KPa, Pa, mbar, mmH2O, mmHg, inH2O, inHg, KGF /cm.
- Maximum and minimum reading pressure values process can be recorded.
- Use the progress bar to display the range percentage of pressure values.

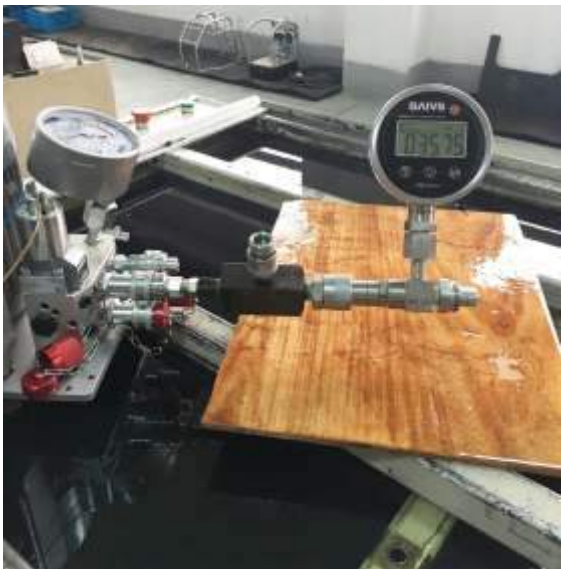


Model Number	Pressure Range		Dimensions(mm)		
	Mpa	psi	Face Diameter(A)	Thread(B)	Connection
YD-100-100MPa	0-100	0-15000	100	G1/2"	Lower Mount
YD-100E-100MPa	0-100	0-15000	100	G1/2"	Lower Mount

Pressure Range: 0-1000bar

Face Diameter: 100mm

Accuracy,% of full scale: $\pm 0.2\%$



Digital Pressure Gage With Control Wire

YD-100E-100MPa is digital pressure gage with control wire, it use for SWP Series automatic hydraulic wrench pump.

Gauge Adaptors

For easy mounting of a pressure gauge onto your system. For details, please refer to the section "hydraulic components".



Gauge Accessories



Needle valve

High pressure needle valve can be used with distributor to realize the function of shutoff. See manifold section for details.



Gauge Adaptors

- For easy mounting of a pressure gauge onto your system.
- SPS7-1XS:SPS16-1XS reserved for light weight hand pumps.

Model Number	Shape	Dimensions(mm)				Dimensional Drawing
		A	B	E	F	
SPS7-1XS		30	30	3/8"-18NPTF	M20X1.5	
SPS16-1XS		30	30	3/8"-18NPTF	M20X1.5	
SGA-3-06		48	131	3/8"-18NPTF	3/8"-18NPTF	
SGA-3-04		48	131	3/8"-18NPTF	1/4"-18NPTF	

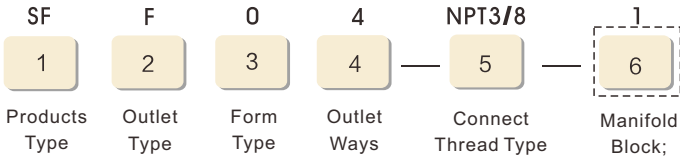
Needle Valves

- The needle valve,realizes the manual shut-off function.

Model Number	Shape	Dimensions(mm)				Dimensional Drawing
		A	B	E	F	
SPNV38M38FT		80	95	3/8"-18NPTF	3/8"-18NPTF	

Manifolds

This is how a Manifold model is built up



1, Products Type

SF=Manifolds

2, Outlet Type

F=Male Joint
M=Female joint

3, Form Type

L= Rectangular shape
O=Circular
M=with Needle valve
C=with Cartridge stop valve

4, Outlet Ways

2=1 inlet and 2 outlet
4=one inlet and 4 outlet

5, Connect Thread Type

NPT3/8=NPT3/8"-18
NPT1/4=NPT1/4"-18

6, Manifold Block

1=Manifold Block

Features

- High quality ultra-high pressure distributor.
- Different choices to meet different working conditions.
- Can be customized according to customer requirements.



Manifold Block		
Description	Model Number	Dimensions(mm)
Rectangle one inlet and two outlet manifold	SFFL2-NPT3/8-1	
Rectangle one inlet and four outlet manifold	SFFL4-NPT3/8-1	
Rectangle one inlet and two outlet manifold can take needle valve	SFFM2-NPT3/8-1	
Rectangle one inlet and four outlet manifold can take needle valve	SFFM4-NPT3/8-1	
Circular one inlet and four outlet manifold	SFFO4-NPT3/8-1	
With Cartridge stop valve one inlet and two outlet manifold	SFFC2-NPT3/8-1	
With Cartridge stop valve one inlet and four outlet manifold	SFFC4-NPT3/8-1	

Sets Selection Example

SFFO4 - NPT3/8 Manifolds

Select manifold block:
SFFO4 - NPT3/8-1
Select quick coupler:
SA - NPT3/8"
High pressure needle valve:
SPNV38M38FT

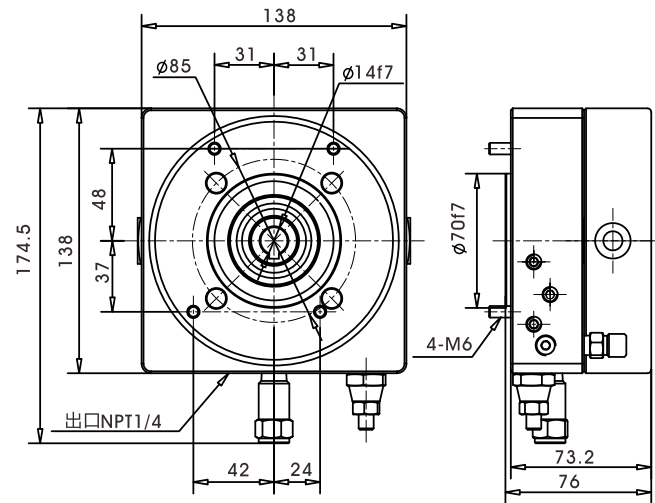
Represents a 4-out NPT3/8" port manifolds with needle valves in a male connector.

High Pressure Needle Valve

Distributor is equipped with high pressure needle valve (cut-off valve). Please refer to the pressure gauge attachment in this section for details.



R02 Series, Pump Head



Displacement: 1.77-1.91cm³/rev

Max. Pressure: 700bar

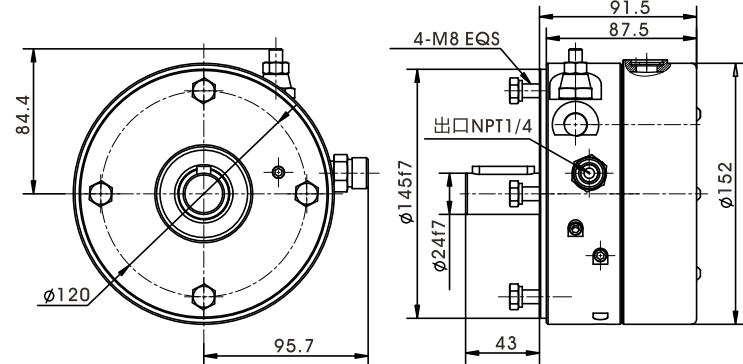
Max. Speed: 2000rpm

Features

- The pump head adopts double-stage plunger pump structure design.
- The pump head is equipped with safety valve, high and low pressure switching valve.

Hight Pressure			Low Pressure			Total Displacement (high+low) (cm ³ /rev)	Max. Speed (rpm)	Model Number
High Pressure Piston Sets Qty. (pcs)	Displacement (cm ³ /rev)	Max.Working Pressure (bar)	Low Pressure Piston Sets Qty. (pcs)	Displacement (cm ³ /rev)	Max.Working Pressure (bar)			
2	0.16	700	2	1.61	100	1.77	2000	R02001
2	0.23	700	2	1.61	100	1.84	2000	R02002
2	0.27	700	2	1.61	100	1.88	2000	R02003
2	0.30	700	2	1.61	100	1.91	2000	R02004

R04 Series, Pump Head



Displacement: 3.43-3.92cm³/rev

Max.Pressure: 700bar

Max.Speed: 2000rpm

Features

- The pump head adopts with double-stage plunger pump structure design.
- The pump head is equipped with safety valve, high and low pressure switching valve.

Hight Pressure			Low Pressure			Total Displacement (high+low) (cm ³ /rev)	Max. Speed (rpm)	Model Number
High Pressure Piston Sets Qty. (pcs)	Displacement (cm ³ /rev)	Max.Working Pressure (bar)	Low Pressure Piston Sets Qty. (pcs)	Displacement (cm ³ /rev)	Max.Working Pressure (bar)			
3	0.42	700	3	3.01	100	3.43		R04001
3	0.50	700	3	3.01	100	3.51	2000	R04002
3	0.58	700	3	3.01	100	3.59	2000	R04003
3	0.75	700	3	3.01	100	3.76	2000	R04004
3	0.91	700	3	3.01	100	3.92	2000	R04005

R03 / R031 Series, Pump Head



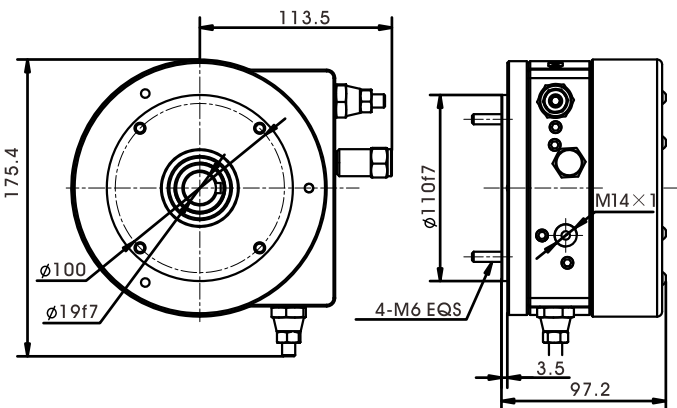
Displacement: 2.39-1-7.98cm³/rev

Max.Pressue: 700bar

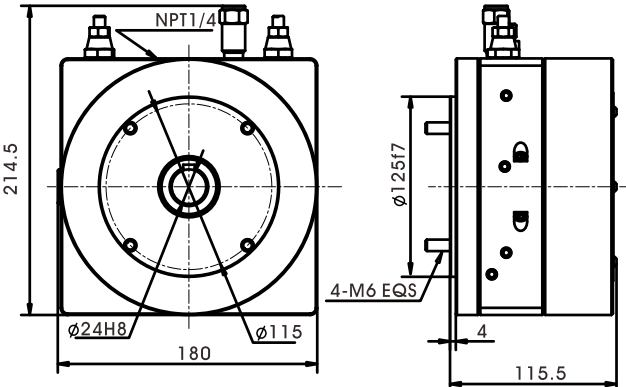
Max.Speed: 2000-3000rpm

Features

- The pump head is designed with three-stage plunger pump structure.
- The pump head is equipped with safety valve, high and low pressure switching valve and high and low pressure switching valve



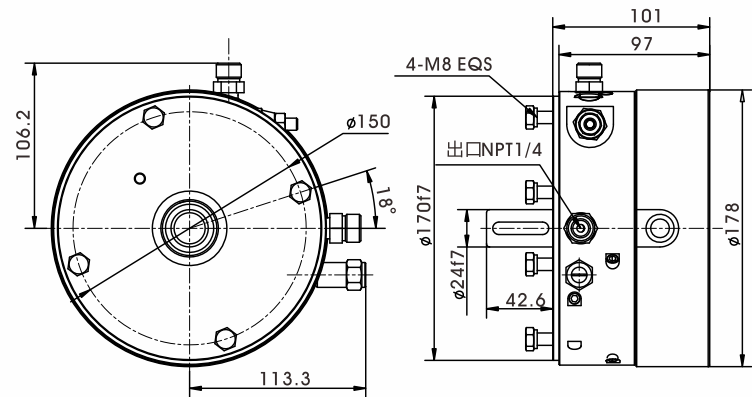
R03 Series



R031 Series

Hight Pressure			Middle Pressure			Low Pressure			Total Displacement (high+low) (cm ³ /rev)	Max. Speed (rpm)	Model Number
High Pressure Piston Sets Qty. (pcs)	Displacement (cm ³ /rev)	Max.Working Pressure (bar)	Middle Pressure Piston Sets Qty. (pcs)	Displacement (cm ³ /rev)	Max. Working Pressure (psi)	LowPressure PistonSetsQty. (pcs)	Displacement (cm ³ /rev)	Max.Working Pressure (bar)			
2	0.19	700	2	0.19	450	2	2.01	100	2.39	3000	R03001
2	0.28	700	2	0.28	450	2	2.01	100	2.57	3000	R03002
2	0.33	700	2	0.33	450	2	2.01	100	2.67	3000	R03003
2	0.38	700	2	0.38	450	2	2.01	100	2.77	3000	R03004
2	0.50	700	2	0.50	450	2	2.54	100	3.54	2000	R03005
2	0.60	700	2	0.60	450	2	2.54	100	3.74	2000	R03006
2	0.46	700	2	0.46	400	4	4.82	100	5.74	3000	R03101
2	0.60	700	2	0.60	400	4	4.82	100	6.02	3000	R03102
2	0.73	700	2	0.73	400	4	4.82	100	6.28	3000	R03103
2	0.73	700	2	0.73	400	4	6.10	100	7.56	2000	R03104
2	0.94	700	2	0.94	400	4	6.10	100	7.98	2000	R03105

R05 Series, Pump Head



Displacement: 6.08-6.65cm³/rev

Max. Pressure: 700bar

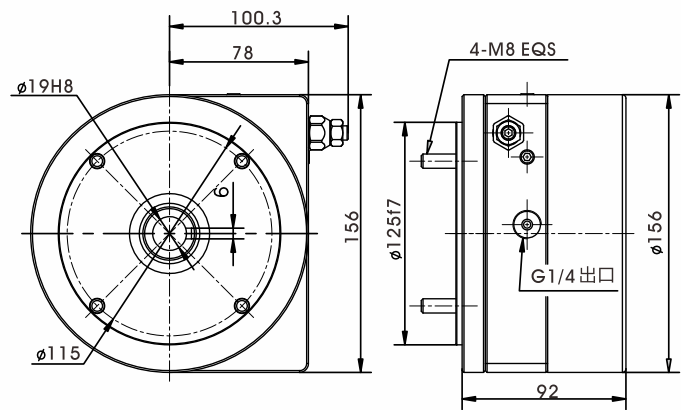
Max. Speed: 2000rpm

Features

- The pump head adopts double-stage plunger pump structure design.
- The pump head is equipped with safety valve, high and low pressure switching valve.

Hight Pressure			Low Pressure			Total Displacement (high+low) (cm³/rev)	Max. Speed (rpm)	Model Number
High Pressure Piston Sets Qty. (pcs)	Displacement (cm³/rev)	Max. Working Pressure (bar)	Low Pressure Piston Sets Qty. (pcs)	Displacement (cm³/rev)	Max. Working Pressure (bar)			
4	1.00	700	4	5.08	100	6.08	2000	R05001
4	1.21	700	4	5.08	100	6.29	2000	R05002
4	1.57	700	4	5.08	100	6.65	2000	R05003

R06 Series, Pump Head



Displacement: 1.83-1.91cm³/rev

Max. Pressure: 700bar

Max. Speed: 2000rmp

Features

- The pump head adopts double-stage plunger pump structure design. The pump head is equipped with a safety valve.

Hight Pressure			Low Pressure			Total Displacement (high+low) (cm³/rev)	Max. Speed (rpm)	Model Number
High Pressure Piston Sets Qty. (pcs)	Displacement (cm³/rev)	Max. Working Pressure (bar)	Low Pressure Piston Sets Qty. (pcs)	Displacement (cm³/rev)	Max. Working Pressure (bar)			
2	0.22	1500	2	1.61	100	1.83	2000	R06001
2	0.27	1500	2	1.61	100	1.88	2000	R06002
2	0.30	1500	2	1.61	100	1.91	2000	R06003

R01 Series, Pump Head



Displacement: 0.42-5.49cm³/rev

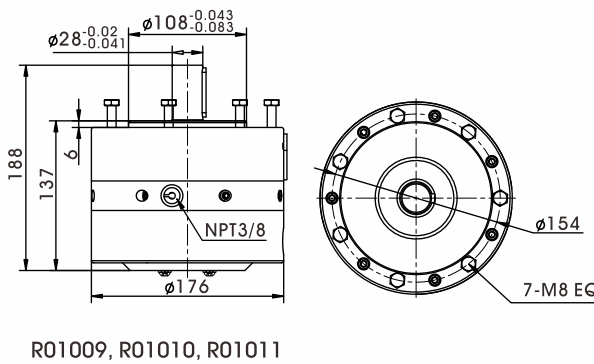
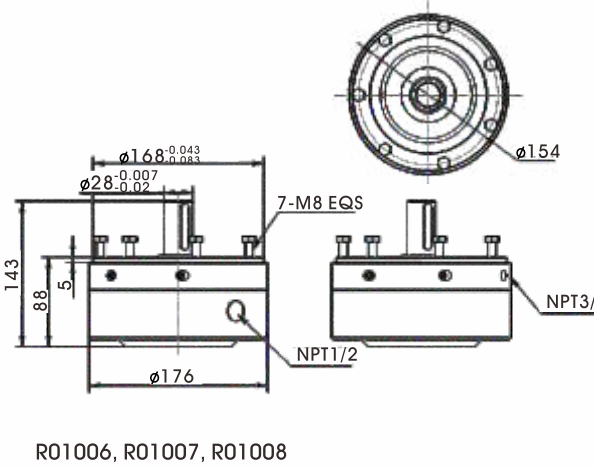
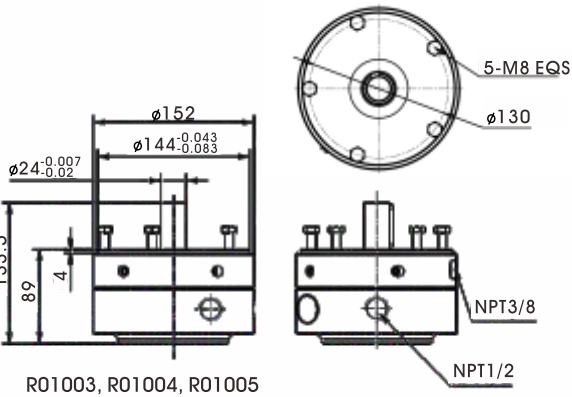
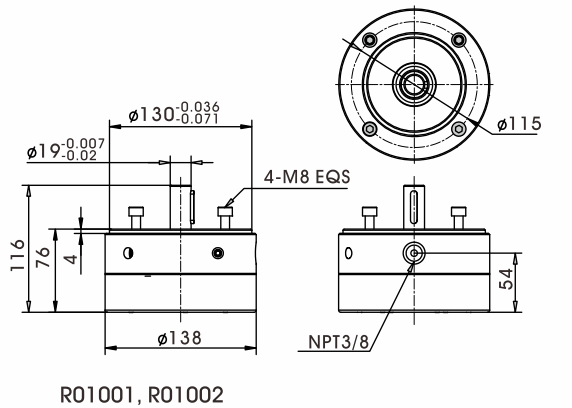
Max. Pressure: 700bar

Max. Speed: 2000rpm

Features

- The pump head is designed with single stage plunger pump structure.
- The pump head is equipped with a safety valve.

High Pressure Piston Sets Qty. (pcs)	Displacement (cm³/rev)	Max. Working Pressure (bar)	Max. Speed (rpm)	Model Number
3	0.42	700	2000	R01001
3	0.57	700	2000	R01002
5	0.96	700	2000	R01003
5	1.25	700	2000	R01004
5	1.52	700	2000	R01005
7	1.76	700	2000	R01006
7	2.13	700	2000	R01007
7	2.75	700	2000	R01008
14	3.51	700	2000	R01009
14	4.25	700	2000	R01010
14	5.49	700	2000	R01011



R012 Series, Pump Head



Displacement: 4.57-14.49cm³ / rev

Max. Pressure: 700bar

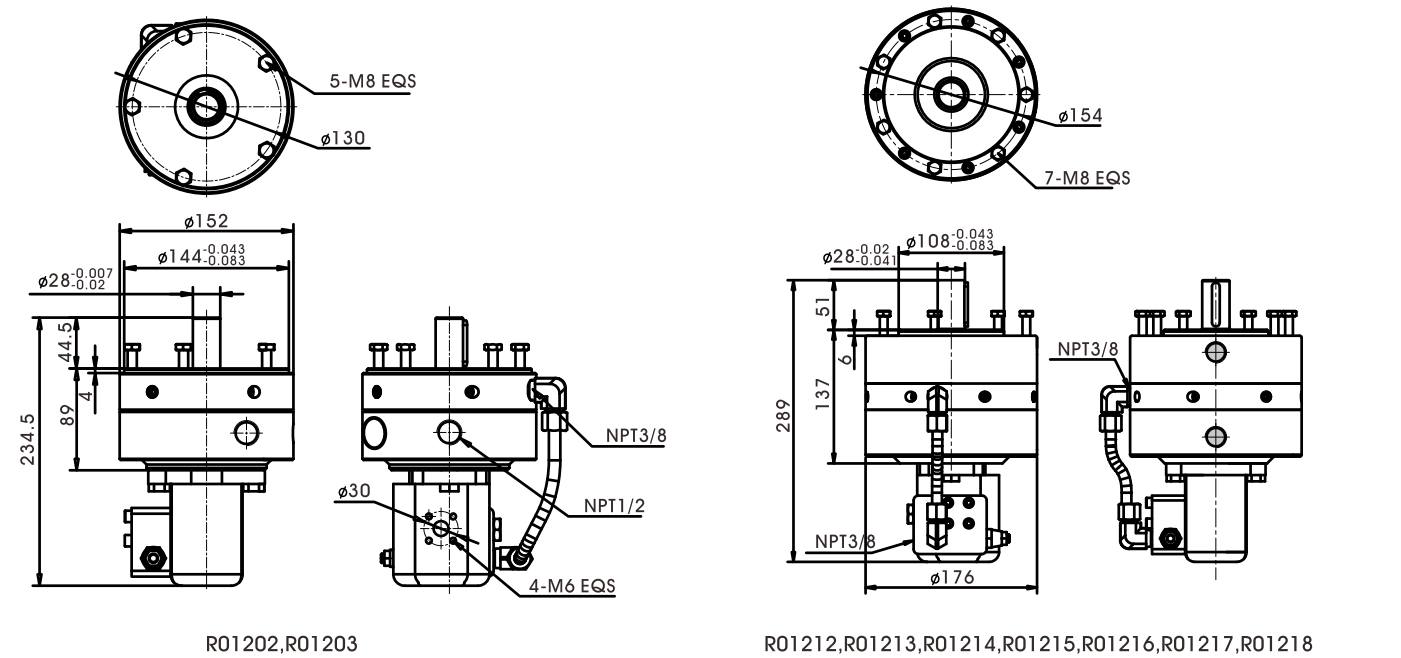
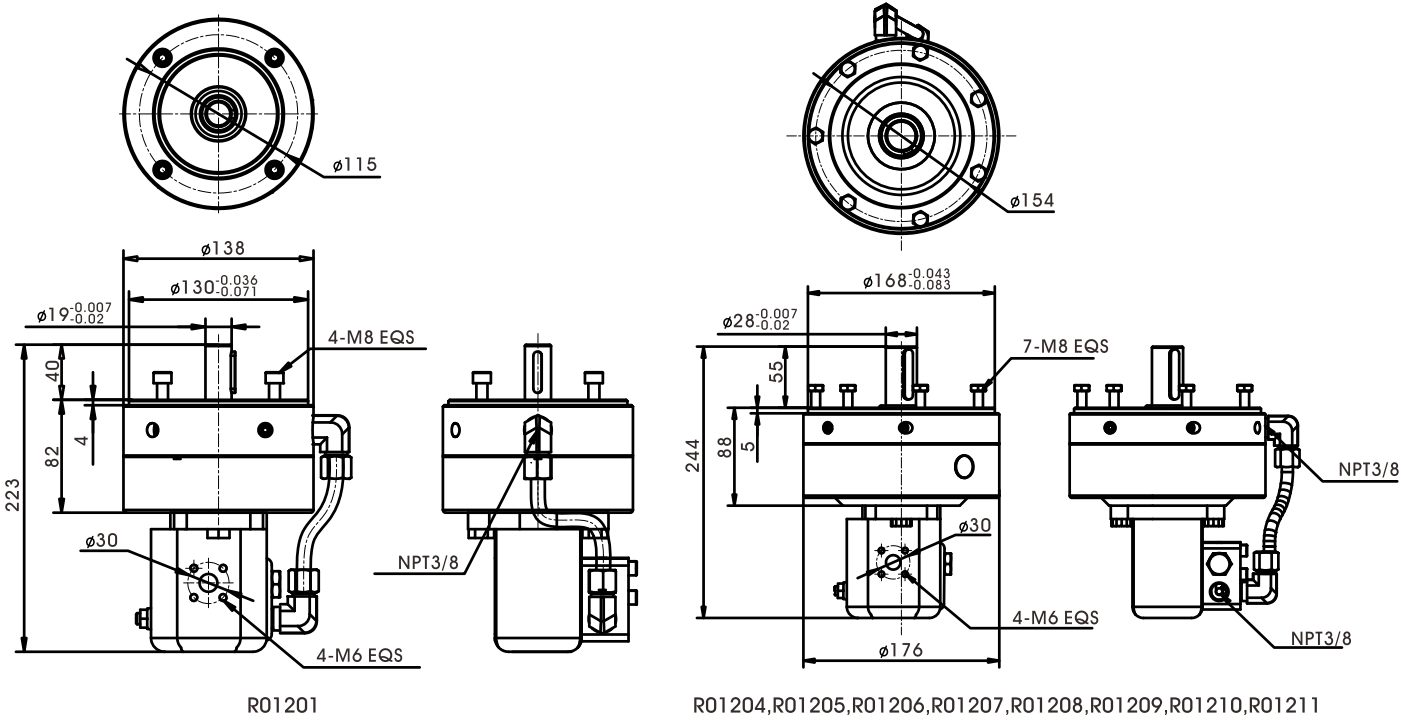
Max. Speed: 2000rpm

Features

- The pump head adopts plunger pump and gear pump to form a two-stage pump structure.
- The pump head is equipped with safety valve, high and low pressure switching valve.

Hight Pressure			Low Pressure		Total Displacement (high+low) (cm³/rev)	Max. Speed (rpm)	Model Number
High Pressure Piston Sets Qty. (pcs)	Displacement (cm³/rev)	Max.Working Pressure (bar)	Displacement (cm³/rev)	Max.Working Pressure (bar)			
3	0.57	700	4	100	4.57	2000	R01201
5	1.25	700	4	100	5.25	2000	R01202
5	1.25	700	6	100	7.25	2000	R01203
7	1.76	700	4	100	5.76	2000	R01204
7	1.76	700	6	100	7.76	2000	R01205
7	1.76	700	9	100	10.76	2000	R01206
7	1.76	700	13	100	14.76	2000	R01207
7	2.13	700	4	100	6.13	2000	R01208
7	2.13	700	6	100	8.13	2000	R01209
7	2.13	700	9	100	11.13	2000	R01210
7	2.13	700	13	100	15.25	2000	R01211
14	3.51	700	6	100	9.51	2000	R01212
14	3.51	700	9	100	12.51	2000	R01213
14	3.51	700	13	100	16.51	2000	R01214
14	4.25	700	6	100	10.25	2000	R01215
14	4.25	700	9	100	13.25	2000	R01216
14	5.49	700	6	100	11.49	2000	R01217
14	5.49	700	9	100	14.49	2000	R01218

R012 Series, Pump Head Dimensions

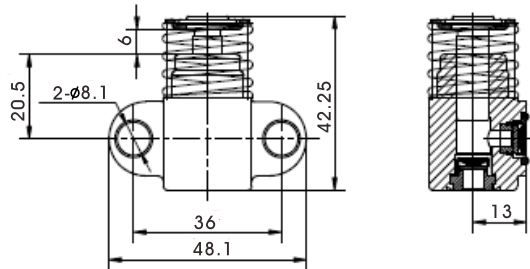


Piston Plunger

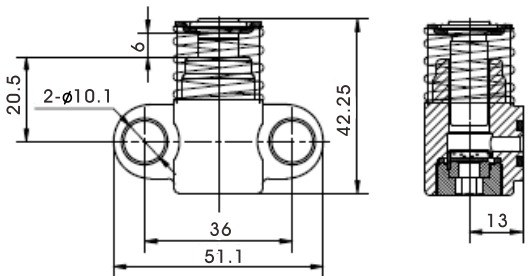


Max. Speed: 2000-2800r/min

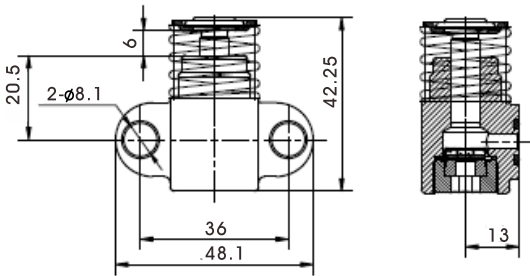
Max. Operating Pressure: 700bar



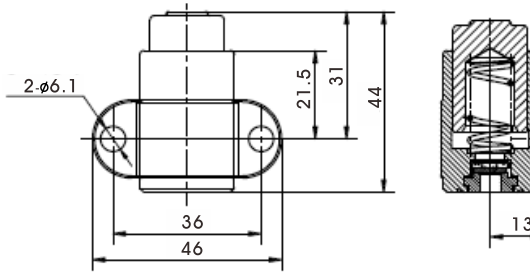
EA5-5,EA5.5-5,EA6-5,EA6.5-5,EA7-5,EA8-5,EA8.8-5



EA8-4,EA8.8-4,EA10-4



EA5-3,EA5.5-3,EA6-3,EA6.5-3,EA7-3,EA8-3,EA8.8-3



EB16-3,EB18-3

Model Number	Diameter	Most Eccentric	Max. Pressure	Max. Speed
	mm	mm	bar	r/min
EB16-3	16	3	100	2000
EB18-3	18	3	100	2000
EA5-3	5	3	700	2800
EA5.5-3	5.5	3	700	2800
EA6-3	6	3	700	2800
EA6.5-3	6.5	3	700	2800
EA7-3	7	3	700	2800
EA8-3	8	3	700	2800
EA8.8-3	8.8	3	700	2000
EA8-4	8	3	700	2800
EA8.8-4	8.8	3	700	2000
EA10-4	10	3	700	2000
EA5-5	5	3	700	2800
EA5.5-5	5.5	3	700	2800
EA6-5	6	3	700	2800
EA6.5-5	6.5	3	700	2800
EA7-5	7	3	700	2800
EA8-5	8	3	700	2800
EA8.8-5	8.8	3	700	2000

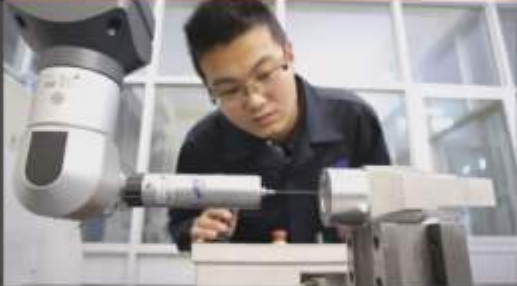


24 years

Experience in designing and manufacturing of hydraulic components

12 years

Experience in Hydraulic product design, manufacturing and project application



24 years

Exporting service experience

